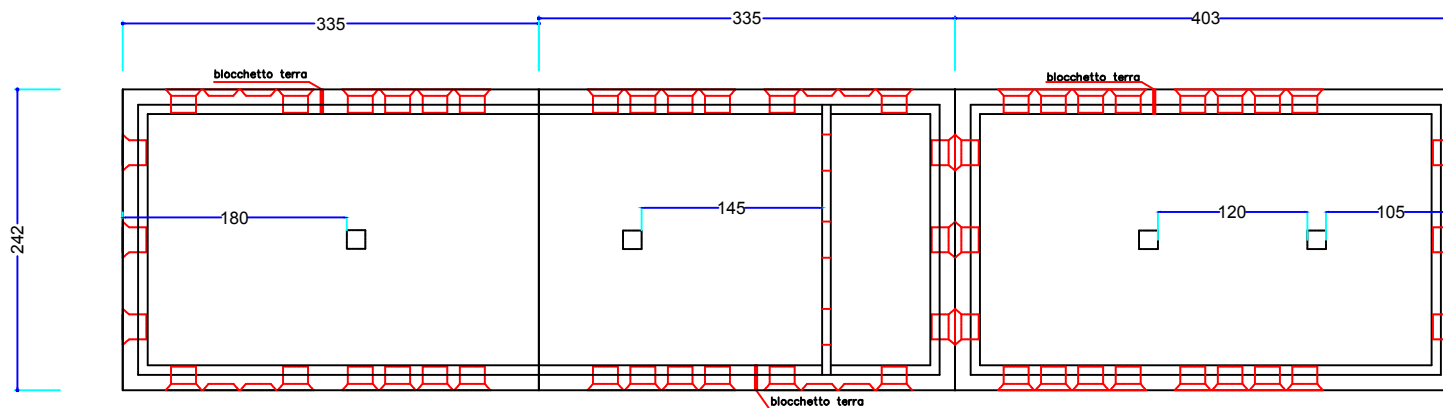
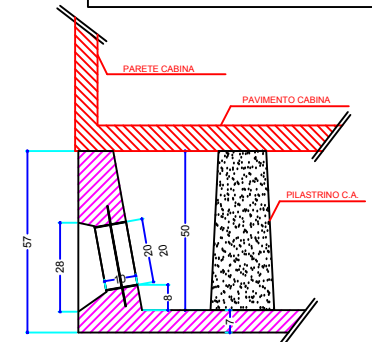


PIANTA CABINA

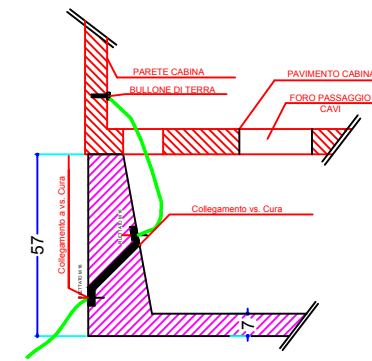


PIANTA BASE A VASCA

- PITTURA ESTERNA CABINA**
- BEIGE/MARRONE - RAL 1011
 - AVORIO CHIARO - RAL 1015
 - GRIGIO/PIETRA - RAL 7030
- In caso di mancata scelta il 'Box verro' dipinto GRIGIO-PIETRA - RAL 7030



PARTICOLARE FLANGIA PVC CON SETTO A FRATTURA PRESTABILITA PER IL PASSAGGIO DEI CAVI



PARTICOLARE CONNETTORE INTERNO-ESTERNO RETE DI TERRA

CLIENTE / CLIENT: SOLUZIONE CON 1 TRASFORMATORE

DESCRIZIONE / DESCRIPTION: CABINA PREFABBRICATA IN C.A.V.

TIPO: "BDM2-90a - mod 674 Ed^3 +404"

SCALA / SCALE: 1 : 60

DATA REV. / DATE REV.: [blank]

ARCHIVIO / ARCHIVE: [blank]

DATA / DATE: 07/02/18

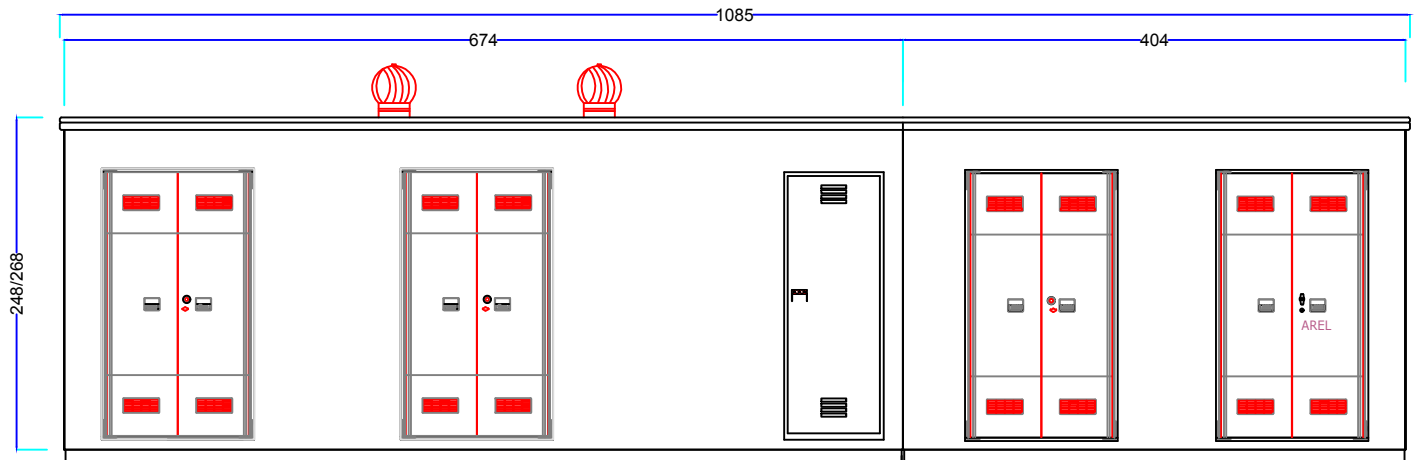
DISEGN. / DRAWN: F.Geroni

CONTROLL. / CHECKED: TOZZI

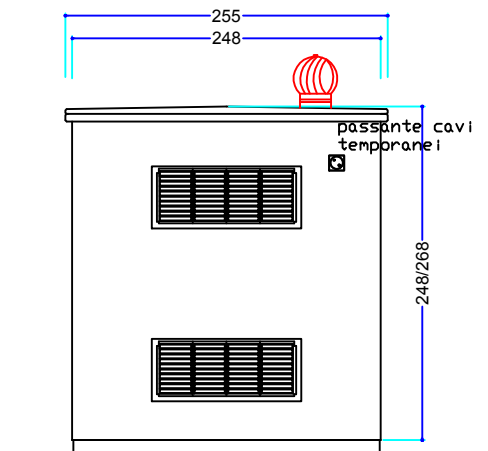
framar-tmt CABINE S.r.l.

Framar-TMT Srl Stabilimento Toscana
Via Forlivese, 40 SAN GODENZO (FI) TEL/FAX=055/8379012/25

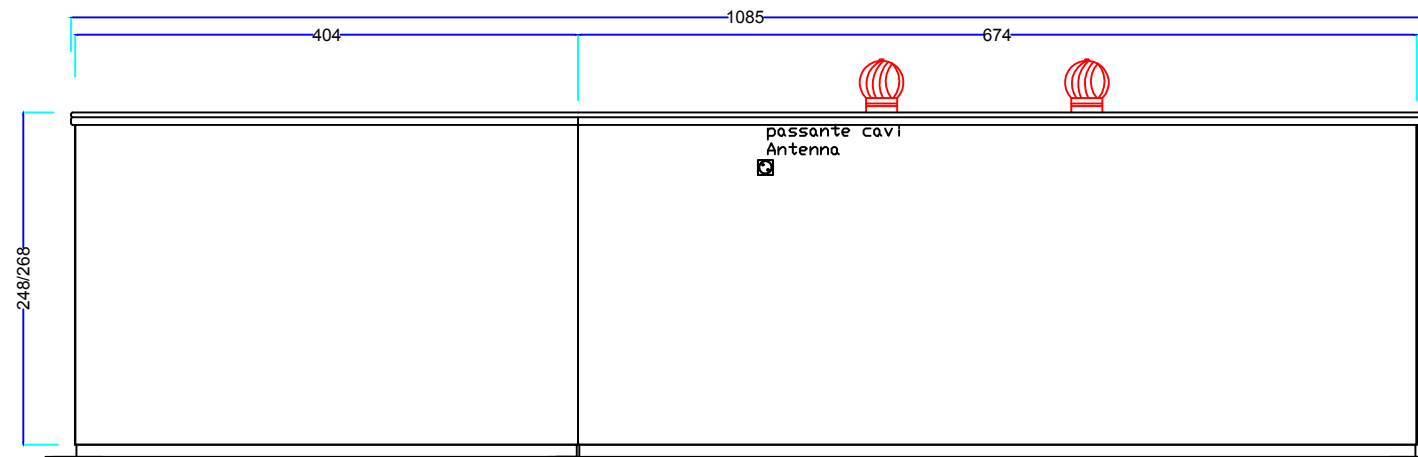
MATRICOLA N°



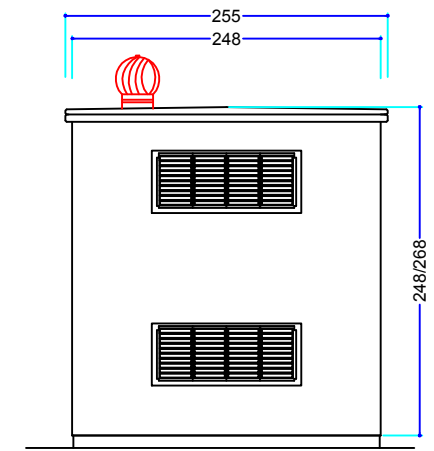
PROSPETTO FRONTALE



PROSPETTO SINISTRO



PROSPETTO TERGALE



PROSPETTO DESTRO

CLIENTE SOLUTIONE CON 1 TRASFORMATORE

DESCRIZIONE CABINA PREFABBRICATA IN C.A.V.

TIPO "BDM2-90a - mod 674 Ed^3 +404"

SCALA 1 : 60

DATA REV.
DATE REV.
ARCHIVIO

DATA 07/02/18

DISEGN. F.Geroni
DRAWN
CONTROLL. TOZZI
CHECKED



Framar-TMT Srl Stabilimento Toscana
Via Forlivese, 40 SAN GODENZO (FI) TEL/FAX=055/8379012/25

MATRICOLA N°